

# Is your "Digital" tool actually slowing you down?

We sat down with Lab Directors and Hematopathologists to discuss their daily reality. These are the 5 challenges defining the crisis in hematopathology - and the truly digital solution that ends them.

## The "fake digital" trap

### The pain

*"I'm tired of tools that promise remote review and still send us back to the glass."*

*"I still end up at the microscope - especially if there's a platelet clump at the edge."*

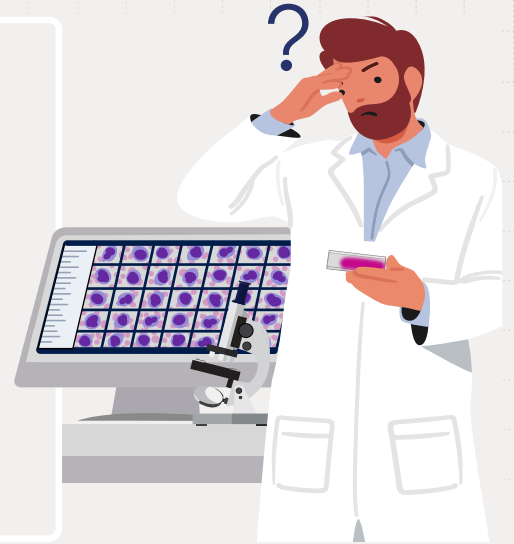
- Hematopathologist

### The reality

Traditional "digital" tools for cell morphology take snapshots of pre-selected cells. They miss the context between the cells. If your staff still walks back to the microscope for 10-15 % of cases to check for platelet clumps or edge blasts, you aren't digital.

### The Scopio fix

**No more microscopes.** Every case starts and ends digitally. We scan all the clinically relevant areas of the sample, from the monolayer to the feathered edge at 100x oil immersion resolution, so you can see the clumps, the rouleaux, and the full context on screen.



## The staffing cliff

### The pain

*"We are constantly short-staffed... one tech calls in sick and we close."*

- Lab manager

### The reality

The "silver tsunami" of retirements means specialized morphology expertise is scarce. When physical presence at a microscope is required, your operation is fragile. One absence can shut down a bench.

### The Scopio fix

**Operational Resilience.** Decouple the expert from the instrument. With remote connectivity\*, a tech at site A can cover for a sick tech at site B instantly - or review cases from home. No slide transfers. No rushing into the lab.

## The weekend backlog

### The pain

*"Samples flagged on Friday sit until Monday." — Lab Director*

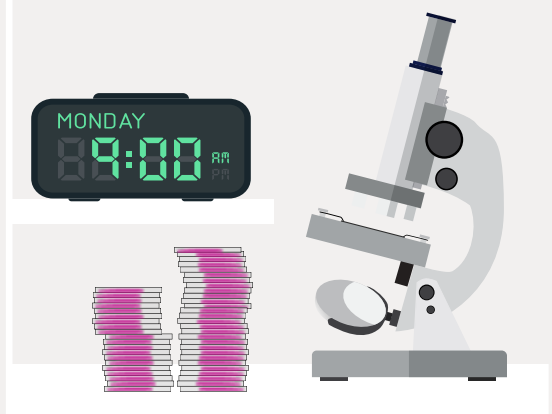
### The reality

Experts don't live in the lab 24/7. Without true remote access, Friday night's Leukemia suspect becomes Monday morning's panic. This creates a dangerous "weekend effect" for patient care.

### The Scopio fix

**Zero weekend backlog.** Our users proved it: remote review\* reduced Sunday turnaround times (TAT) by 59%. "I can access the whole Scopio system in all our sites... even from the United States."

— Joyce Richardson, ZLM, Switzerland



## The bone marrow anxiety

### The Pain

*"Partial scanning is gambling. If I can't see the whole smear, I can't trust it for marrow."* — Hematopathologist

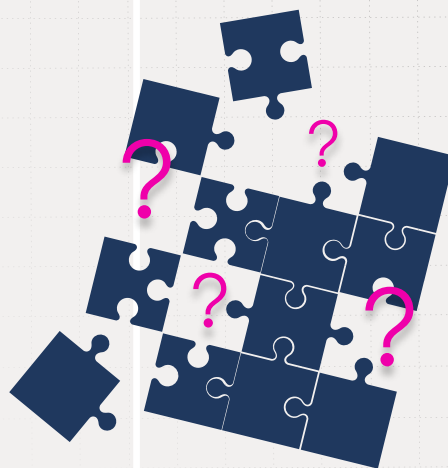
### The Reality

In bone marrow aspirates (BMA), diagnostic cells can be focal. Relying on systems that only scan "regions of interest" keeps hematopathologists awake at night wondering what lay outside the scan.

### The Scopio fix

Full-Field BMA is the world's first digital solution to offer Whole Slide Imaging for marrow, allowing you to navigate the entire smear digitally so you don't gamble on the diagnosis.

*"You need to move freely around the slide to identify areas of abnormal cells."*  
— Mattias Hofmans, Ghent University Hospital, Belgium.



## The physical toll

### The pain

*"I quit pathology because of the eye strain... throwing up from the migraine"*  
- Pathologist

### The reality

Manual microscopy isn't just slow; it hurts. Ergonomic injury and eye strain are driving talented professionals out of the field just when we need them most.

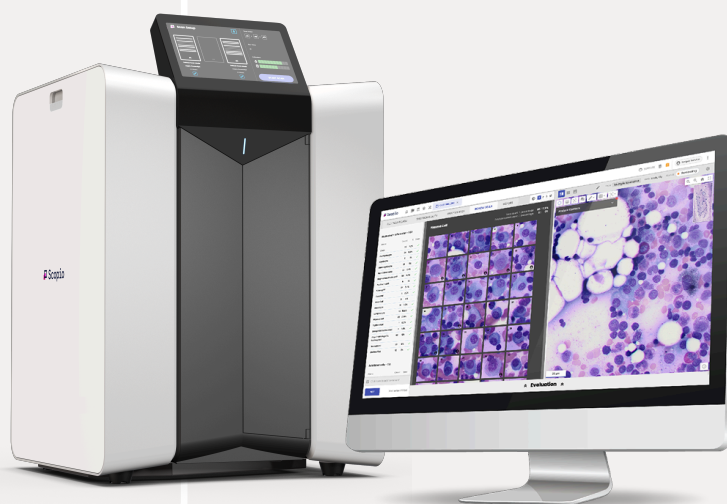
### The Scopio fix

**Disengagement from glass.** Review cases on a high-definition monitor. Zoom, pan, and annotate with a mouse - not your neck and eyes. Extend careers and improve quality of life.

100x resolution.  
100% digital.  
From everywhere.

Don't let "digital" hold you back.  
See the Full-Field difference

From eliminating the "weekend effect" to ensuring you never miss a focal lesion in marrow, Scopio Labs isn't just an upgrade. It's the end of the manual microscope era.



- Via the secure hospital network.
- Scopio's Full-Field Bone Marrow Aspirate Application is CE-marked cleared for sales in additional regions. Not commercially available in the US for in vitro diagnostic procedures.

Ready to go fully digital?

Let's talk